

---

# ***Personalized Engraved Wooden Bottle Opener***



**Bailey Wu**  
**Santa Barbara Hackerspace**  
March 1<sup>st</sup>, 2022

---

---

# Background

Congratulations on embarking on your personalized bottle opener project! I made these for two friends that I played disc golf with and below are the instructions to help you through the process. Remember, feel free to make adjustments and modifications as needed to suit your unique style and preferences. DIY projects are all about flexibility and customization!

You might want to experiment with different wood types, epoxy colors, or engraving designs to make your bottle opener truly special. Don't hesitate to modify the plans accordingly, but keep in mind that the math will be up to you!

Undertaking a DIY project like this implies familiarity with the appropriate tools, including saws, sanders, and engraving tools.. If you're not confident in your proficiency with these tools or any aspect of the project, it's strongly advised that you seek guidance from a mentor or experienced individual.

**Disclaimer:** Your safety is paramount, so always prioritize safety measures, wear suitable protective gear, work in a well-ventilated area and exercise caution while using power tools. These instructions are provided for guidance only and are not liable for any harm or injury that may occur. Please consult the manuals of all machines and supplies used to ensure proper handling and safety protocols.

Happy crafting and enjoy creating your personalized bottle opener!

# Supplies List

- Wood Blanks
- [Bottle Opener](#)
- [Magnet](#)
- [Epoxy & Hardener](#)
- [Mica Powder](#)
- Sandpaper
- Scouring Pad
- Mineral Oil



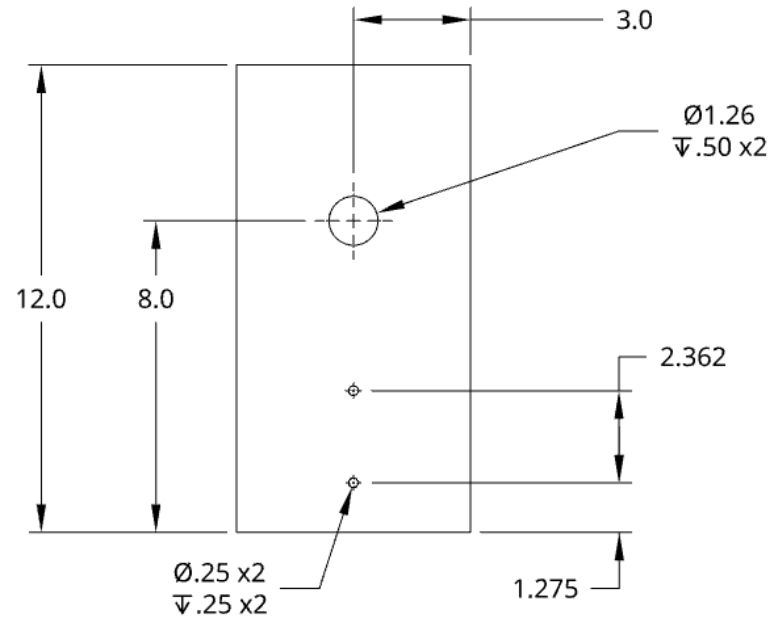
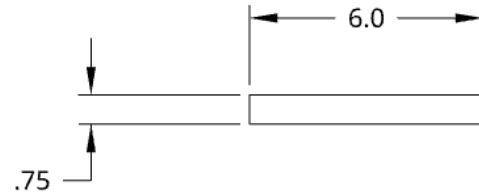
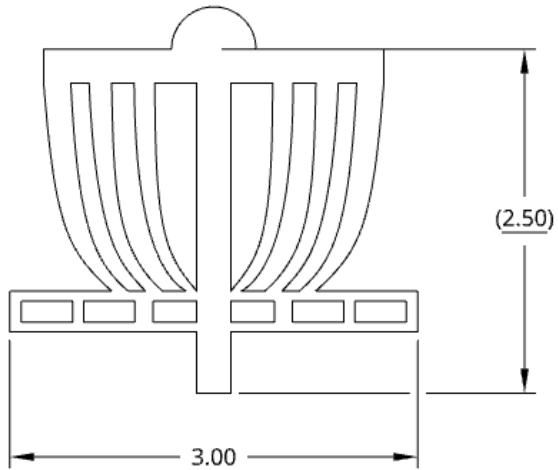
# Equipment

- Table Saw
  - Miter Saw
  - Planer
  - Drill Press
  - Laser Engraver (for designs)
  - Sander
  - Router
  - Blowtorch
- Used for cutting wood to final dimensions



# Dimensions

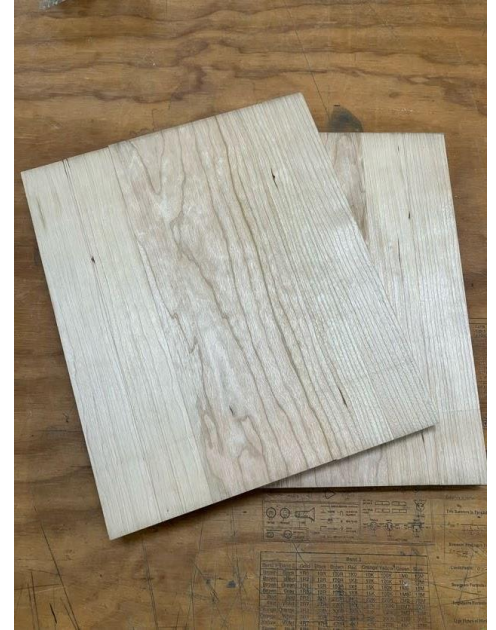
- $\frac{3}{4}$ " x 6" x 12"



---

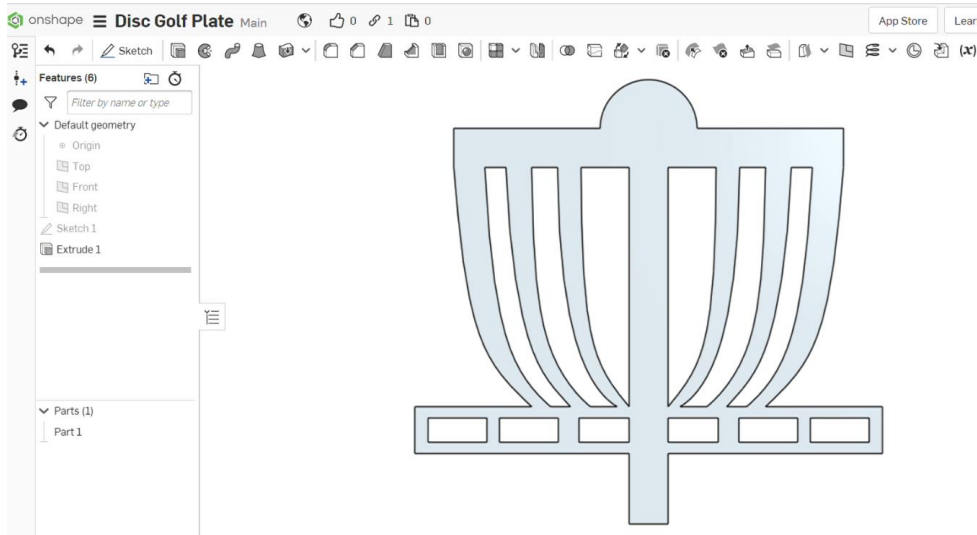
# Instructions

- 1) Start with Wood Blanks and use Table Saw & Miter Saw to Final Length & Width Dimensions.  
(Thickness will be finalized in a later step)



# Instructions

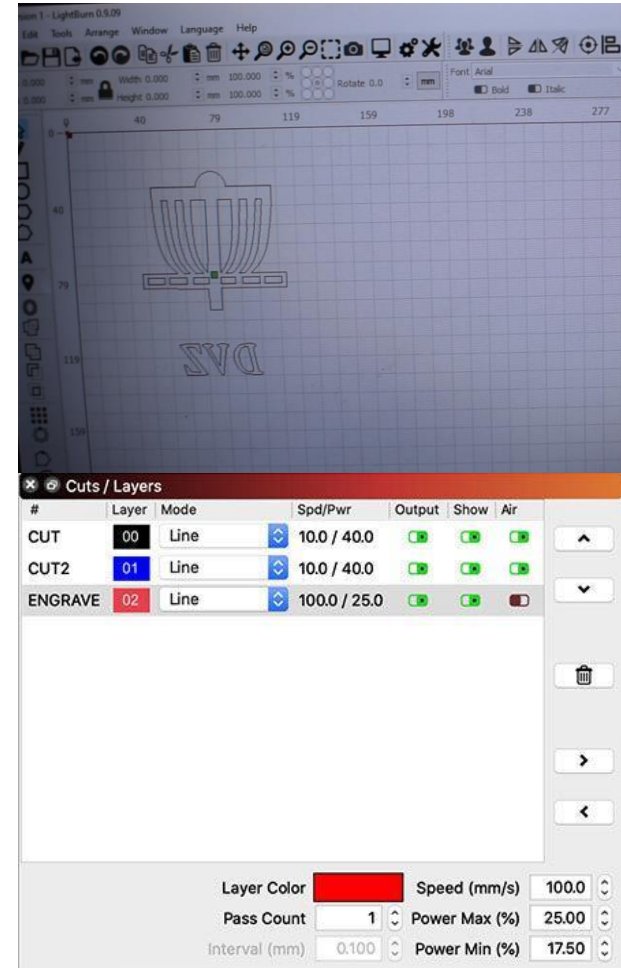
## 2) Customize Design & [Use Inkscape to export to DXF File](#)



# Instructions

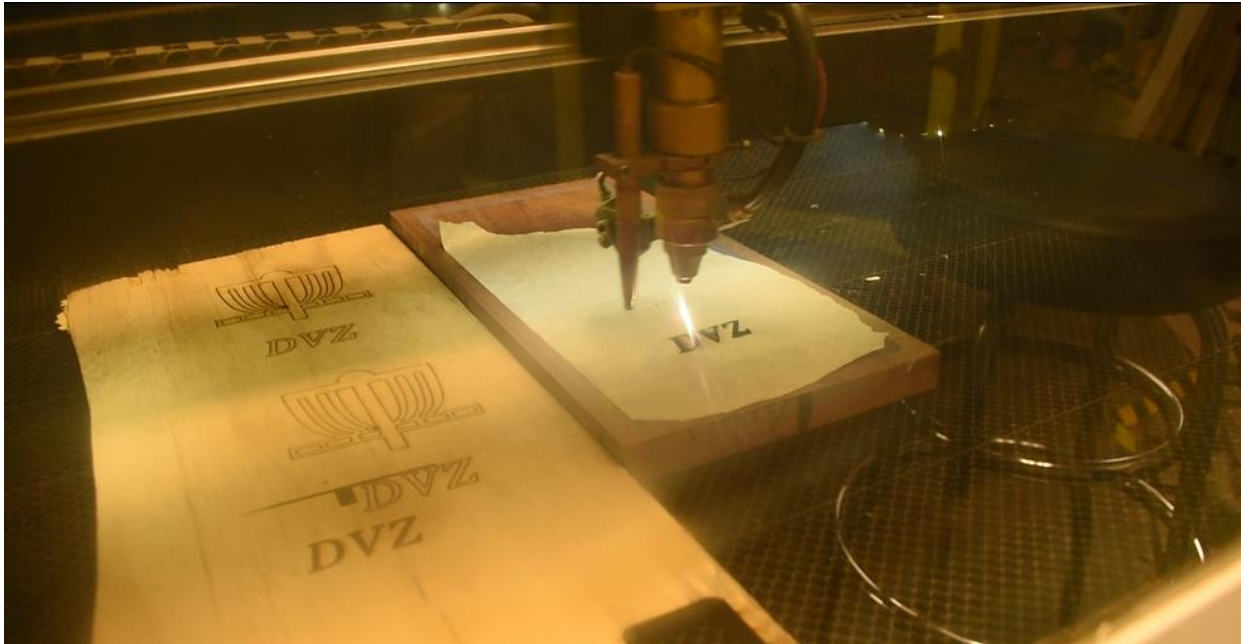
## 3) Laser Engrave Design onto Wood Blank

- Use dummy piece of wood to test and confirm the following:
  - Ensure workpiece is straight and square
  - Laser Parameter settings
- Place Masking Tape over finer details



# Instructions

- 4) Engrave once laser power settings and workpiece alignment is confirmed

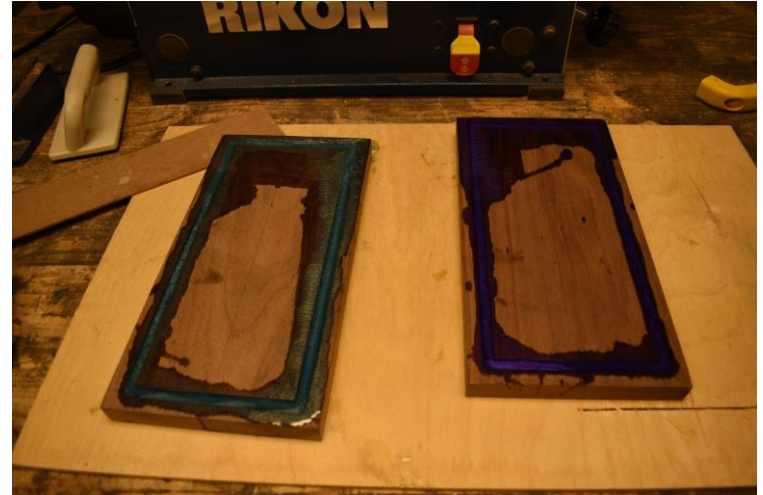


# Instructions

## 5) Epoxy Pouring

- Follow Epoxy manufacturer instructions for proper Epoxy & Hardener Ratio (Should be 1:1)
- Mix with designated colored Mica Powder
- Pour Epoxy mix over designated areas
- Use Blowtorch to remove bubbles
- Let epoxy cure (see manufacturer instructions)

*I recommend creating a small coupon of epoxy to verify when epoxy is fully hardened*



---

# Instructions

## 6) Plane to Final Thickness



---

# Instructions

- 7) Extrude Cut & Attach Magnet Behind Board
- 8) Fill with Epoxy

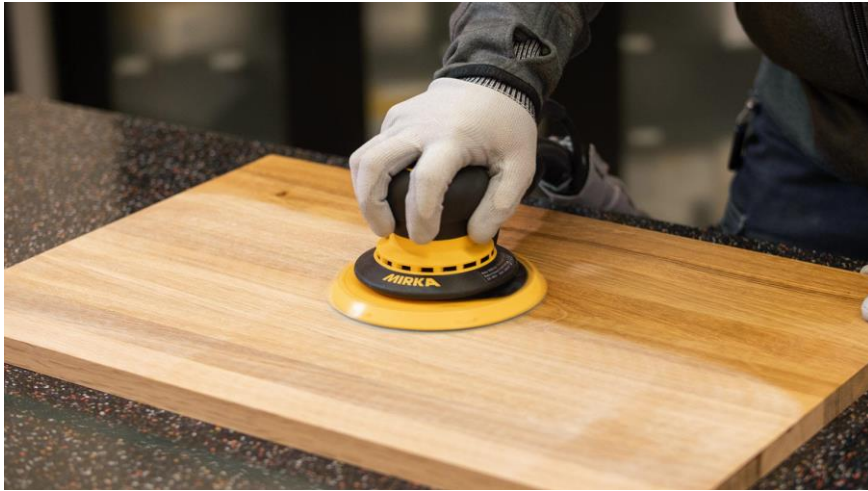


---

# Instructions

## 9) Sand surfaces & round over corners using router

- Start with Low Grit sandpaper and gradually work up to High Grit



# Instructions

## 10) Apply Mineral Oil

- Cure for 24 hours
- Use Scouring Pad to remove excess oil

## 11) Attach Bottle Opener



# Finished Product

